

THE RAILYARD DISPATCH

THE NEWSLETTER OF THE DANBURY RAILWAY MUSEUM
SPRING 2020



A MESSAGE FROM THE PRESIDENT

STAN MADYDA

It is my sincere wish that you and your families are well as we all adjust to the Covid-19 virus. At the onset of the Covid-19 crisis, before any closures were mandated, the Events Committee met and voted to cancel the annual Easter Bunny event. With only two advanced ticket sales, maybe people were starting to think about staying away from crowds. At the Events Committee meeting, some ideas were suggested for new events.

The Annual Meeting scheduled for March 18th was postponed indefinitely. We are required by law to have an Annual Meeting. Perhaps at some point, we will. There is a very good support system in Connecticut that addresses the concerns of Non-Profit, Museums and Historical Societies. I'll be reaching out to them as we start to re-open. Undoubtedly, there are other organizations faced with the same situation.

The monthly Board of Directors meeting was postponed a week in order to investigate holding the meeting by teleconference. The meeting went well and we will continue to meet this way monthly until we can again congregate at the museum. Treasurer Patty Osmer reviewed our finances. We are in a position to continue to pay our bills and will tap into reserve funds if necessary. Some of our monthly services have been canceled. We'll continue to monitor any financial assistance that may be available. The teleconference platform is available to any of the committees that would like to meet this way.

A part of the Annual Meeting, is the awarding of the Gandy Dancer Award. The Gandy Dancer Award was conceived by the late John Flower. John was one of our founders and former Chairman of the Board who wanted to make sure individuals who gave their time and expertise to the Museum were properly recognized. I did not want to delay this, so I met the recipients at the Museum to present them with their awards. This year's recipients are Jose Alves, Joe Laporta and Mike Laporta. Jose has involved himself in many aspects of the Museum from day to day task to heading the Events Committee, improving the exhibits, outreach and working on the new website, to name just a few. He has been able to be at the Museum when others could not. Joe and Mike have been active members of our train crew for a number of years. When last minute events have prevented assigned crew members to come in, Joe and Mike have been there for us. Without their commitment, we would have had to cancel some of our

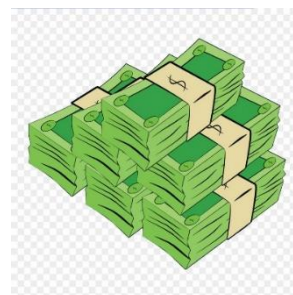
Railyard Locals. In addition, they help out with many other projects around the Museum. I plan to say something at the Members' Picnic so they can be recognized by their fellow members.

On a sad note, members Robley Sailer passed away in February and Bill Nicholson in March. Rob liked coming and manning the Gift Shop and Front desk. Rob was another member who could be relied on to come in at the last minute when we found ourselves short staffed. His son said he enjoyed the people at the Museum and talking to others about his time with us. Bill's hobby was woodworking and he put his talents to work on restoring a baggage cart, the New York Central caboose, making window frames for the 1455 and personal effect drawers for the clerks working in the RPO car. He was also very kind in donating many wood working tools and machinery to the Museum.

2020 will be a difficult year for the Museum, but we will do all we can to get daily operations back to normal as soon as possible. The years following the 2008 recession were difficult, but we persevered. There were times in our early years, we had little money in the bank. We are in a better position now to get us through this crisis. I look forward to the day when the Museum is again filled with visitors and members all enjoying what we built over the last 26 years. Stay safe.

MUSEUM RECEIVES A \$2000 GRANT STAN MADYDA

In March, the Museum received a \$2,000 grant from the Ridgefield Thrift Shop. Thanks to Alden Burns, we were made aware of this grant. The money will be used towards the purchase of a high-end scanner for the Archives/Library. There are many documents and photos that need to be digitally saved and catalogued. Over the last year or so, there have been requests for photos by researchers and authors. Having these in a digital catalog will not only save time in searching, but allows our collection to be put to good use. This year the Ridgefield Thrift Shop awarded \$750,000 to 92 different non-profits in the area. This represents a \$250,000 increase from what they awarded last year. Funding of grants comes from Thrift Shop sales. They are located at 21 Governor Street in Ridgefield and is worth a visit once they are allowed to re-open.



CONSIDER MAKING A DONATION TO THE MUSEUM

The recently passed CARES Act designed to help provide relief to people affected by the impact of COVID 19 pandemic has a change for the 2020 tax year regarding donations to charities and non-profits. If you take the Standard Deduction, you will be allowed to deduct donations up to a total of \$300 per year and deduct it directly from your 2020 Adjusted Gross Income (AGI) If you itemize deductions, you cannot take this deduction off of AGI. Instead, you can itemize total contributions up to 100% of AGI (vs. 60% of AGI previously). You should still consult your tax advisor for details of how these changes apply to you.

DRM YEARLY REPORTS FOR 2019

PRESIDENT'S ANNUAL REPORT TO THE MEMBERSHIP – March 2020

STAN MADYDA

As I write this report, the COVID-19 virus is starting to spread in the United States. The coming year can be a difficult one for the Museum as we assess what the virus outbreak means in terms of our events, staffing and staying open.

We can, however, look back at the past year at our accomplishments. I can't thank enough the members who have supported the Museum by giving their time and making monetary donations. This support is vital to continue with our growth and success.

Once again, the Museum finished the year profitably. This is due in part to everyone needing funds acting fiscally responsible. We continue to look at ways to cut our costs and increase revenue. We enhanced our events which resulted in many positive responses from visitors. Sue Teer, our Events Coordinator for many years, stepped down. We owe a lot to Sue for organizing and setting up our events. Hands on the Throttle continues to grow and is well received.

A water main break in December which left seven feet of water in the basement affected the first weekend of the Santa Train as we had to close. The City of Danbury through their various departments worked at the problem so that we could re-open 10 days later.

We began the process of developing a new website which should be active in several weeks. The new website will allow us to show more of what the Museum has to offer and be more user friendly. A big thank you goes out to John Silbert who maintained our website for many years. When no else coming forward, John stepped up.

Membership was also turned over to Don Konen on the retirement of Frank Sullivan. Thank you, Frank, for your years of service and also stepping up many years ago when we needed someone to handle membership.

A workshop on board development and fund-raising was attended by Steve Gould, Jose Alves and myself. The all-day workshop presented ideas that can be used by the Museum.

This past year some several new pieces of equipment added to our collection thanks to Metro North and CDOT. These agencies have been very helpful in seeing that historic pieces of equipment that they no longer have use for be saved. We gladly accepted donations for F-10, #413, the former New York Central baggage car that was under that Waldorf Astoria, a ballast regulator and a pair of M-2s. We are awaiting delivery of a steam era covered hopper and an New Jersey Transit Comet Coach. An out of service tamper was picked up at the Catskill Mountain Railroad and will be used for parts.

There is not much new to report on the electrics locomotives in Albany. At some point, the land on which they sit will be developed by the Port of Albany

Work continues on the Mill Plain Station. The sides of the building are up and the roof is on awaiting shingling. We have been using Salem Preservation as our contractor and at times museum members have been able to help with some of the work, saving money. We were recipients of the \$10,000 Founders Grant from the Amherst Railway Society.

The turntable project as well as several other restoration projects were worked on during the past year. New restoration projects for the coming year have managers and approval from the Restoration Committee.

In July, the City of Danbury dedicated the Uncle Sam statue. Although we lost several parking spaces, having this piece of Danbury history enhances the visitor's experience.

Last spring, we were able to get library grade shelving and some furnishings from the former Taunton Press building in Newtown. The shelving can be used in the Archives and re-purposed for exhibits. All was in excellent shape and new would have cost in excess of \$12,000.

Inside the station, exhibits continue to be worked on and changes made. The G Scale Layout was dismantled and the children's play area was moved to that spot. More changes will be made in the coming year with regard to the layouts. A new front desk area was constructed that fits in nicely with the general décor of building.

2019 saw Rapido Trains do their first open house in the United States which included a live presentation of new products on Facebook. Rapido has produced several models that represent parts of our collection. In October, we hosted the very successful Jazz Night from Western Connecticut State University where two student groups performed. We will continue to look at ways we can partner with entities to bring exposure to the Museum.

A meeting was held with two local businessmen who want to help us with our growth. We realize more outreach needs to be done with the local business and municipal community. One of the points covered in the meeting was how the proposed train service between Danbury and Brewster would impact the Museum and how we can take advantage of the service.

The Archives and Library remains a source for researchers and we have seen an increase in the number of requests. The Westman photo collection has been of interest to a couple of individuals and their projects.



**SECRETARY'S 2019 REPORT FOR DANBURY RAILWAY MUSEUM ANNUAL MEETING
MARCH 18, 2020
STEVE GOULD**

1. **2020 Election Results:** There were 100 ballots received vs 320 mailed out equals a rate of return of 31%. Rate of return for last year was 27.4%. For 2018 it was 28.5% and 2017, 27.9%. Our lowest return was 17% in 2005. The results show the following candidates have been elected to the Board of Directors: Al Gruber, Don Konen, Jeff Van Wagenen, and Bill Wagner. Results for the Bylaw Changes: 75 approved and 13 disapproved. There were donations of \$1,625 to the Mill Plain Station Fund received with ballots returned.

2. I had an article I wrote about the Tonawanda Valley restoration published in the NYC Historical Society's quarterly magazine. Art Slothower, Project Manager, was shown on the front cover working on the lettering of the car. It was in the 2nd Quarter, 2019 issue.
3. I wrote a grant request to the Amherst Railway Society for the \$10,000 Founder's Grant; we were notified by the Society that we had won the 2019 award. Patty Osmer, Don Konen, and I attending the Society's meeting in August to accept the award.
4. We had four very successful Danbury elementary school class visits, totaling over 300 students and teachers, in May.
5. Renewal of our liability, property, and umbrella insurance policies for the new insurable year in September resulted in a reduction of \$1,700 in premiums.
6. Connecticut State Police filmed an PSA video in the Museum yard in September for CT Rail Safety Week.
7. Stan Madyda, Jose Alves, and I attended a seminar in Shelton in October on Boards of Directors and Fundraising, bringing back some excellent ideas.
8. In December, Jose Alves and I met with an insurance adjuster to identify losses of Museum property that was damaged in the basement flood. We received of payment of \$3,167 in January.



**FINANCIAL HIGHLIGHTS 2019
GENERAL OPERATING FUND
PATTY OSMER**

The General Operating Fund is what is used to pay the Museum's day-to-day bills. Each January, a balanced budget is approved by the Board of Directors. Income above and beyond normal operating expenses are budgeted to go into Asset Restoration/Preservation.

INCOME	2019	2018	% of Income vs. Expense
Events (Income less Expenses)	45,747	49,353	34.7
General Admission	47,729	56,167	36.3
Sales (less cost of goods)	20,086	27,021	15.3
Membership	10,632	9,740	8.1
General Contributions	5,809	7,916	4.4
Interest Income	188	160	0.1
Usage of Facility	1,468	2,725	1.1
GROSS PROFIT:	\$131,659\$	\$153,082	
EXPENSE			
Accounting/Legal/Insurance	17,620	18,626	16.2
Advertising/Printing/Postage	4,697	6,463	4.3
Asset Restoration/Preservation	7,185	4,239	6.6
Exhibits	189	806	0.2
General Maint. & Supplies	12,557	12,347	11.5
Locomotive Operations	3,654	5,107	3.4
Note 1 Misc (Misc, Fees, etc)	10,787	6,421	9.9 (1)
Utilities (Gas, Electric, Tel, Refuse)	37,527	38,701	34.5
Note 2 Yard, Maintenance Equip, Rentals	11,621	6,345	10.7 (2)
Security	2,988	326	2.7
Acquisitions	2	33,094	0.0
TOTAL EXPENSES:	\$108,827	\$132,475	
NET ORDINARY INCOME:	\$ 22,832	\$ 20,607	
BEQUESTS:	\$ 52,343		
BALANCE ON HAND 12/21/2019:	\$649,267		

Note 1: Includes Rubber flooring for play area, computer for treasurer, and down payment for new web hosting

Note 2: Includes pest control, fence repair, and ties for track work

TEMPORARY RESTRICTED FUND BALANCE

Temporary Restricted Funds are accounts where monies are earmarked for a specific purpose. The majority of money in these funds comes from donations or grants.

INCOME **\$** **8,795**

FUND BALANCE AS OF 12/31/19

1402	13,675.03
1455	10,316.83
Burro Crane	4,183.08
Coach Repair	2,500.00
D&H Caboose	1,275.00
Electrics	8,686.90
Jeff Scott	2,880.96
John Ivansco (Pump House)	443.05
Library	15,009.09
Meserve - Video	415.31
Model Layouts	4,065.95
NH Box Cars	774.75
NH Caboose Paint	1,300.00
NH Cab Roofwalk	1,000.00
NYCHR Caboose	2,083.10
RDC	10,129.05
Rutland Misc	485.86
Rutland Boxcar	3,823.01
Shop	54,584.27
Tonawanda Valley	521.92
Tools	200.00
Track	-
Turntable	6,335.12
	144,688.28



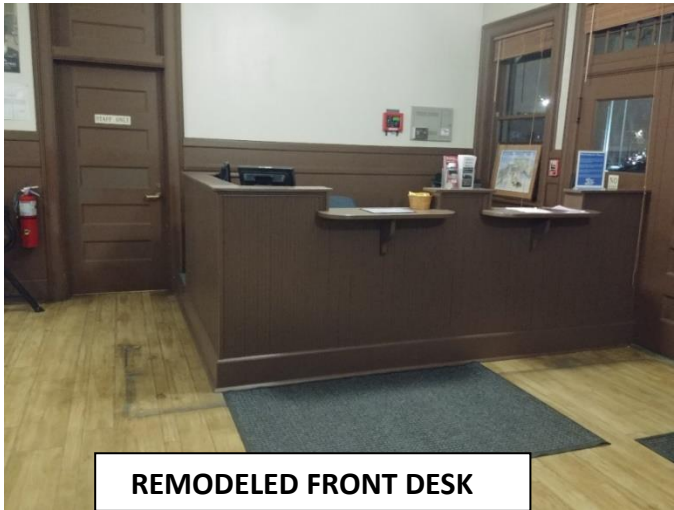
VICE PRESIDENT REPORT ANNUAL MEETING JIM TEER

In addition to what was in the President's report, I would add that during the course of the past year much needed track work was done such as readjusting the gauge on part of track 42. This

was accomplished right at the start of the Easter event and more than likely prevented a derailment.

The completion of the turntable timber channeling was finally accomplished thanks to help from Don and Franz. Two of the switch tracks in the yard which are part of our running route underwent timber replacement and necessary tamping. Thanks to Jeff, Justin, Jose, Owen (and Dad), Max, and anyone else I might have missed.

LOOK WHAT'S NEW!



REMODELED FRONT DESK

If you've been to the museum recently, you will have noticed a new front desk area. Several years ago, Wade Roeser thought about re-doing this area and drew up some ideas that would make it blend in with the overall décor of the museum. While the existing front desk served us well for many years, it was beginning to show its age.

This winter, a group of members, headed by Bill Wagner began the tear down of the old desk and building of the new one.



A VIEW FROM BEHIND THE DESK

Members working on the project were Jeff Van Wagenen, Franz Gerencir, Jose Alves, Justin Chapin and Jim Teer. Al Kellogg milled the wainscoting at his business, Kellogg Hardwood Lumber. New desks were donated by RKE Productions.

The new construction provides a much more

comfortable and useful area for our front desk volunteers. A new copier/printer was purchased so front desk personnel no longer have to leave the desk unattended whenever they need to go to the office to make a copy.

Money for the materials came from a restricted fund set up in honor of Jeff



THE NEW WORK SPACE

Scott. Jeff was a loyal front desk volunteer who thoroughly enjoyed his time greeting visitors and talking about the Museum. When he passed away, his family asked that donations be made to the DRM in his memory. It was decided that these funds could be used for the front desk. A plaque will be mounted acknowledging this.

WORKING ON THE MILL PLAIN STATION RESTORATION



DON KONEN AND PATTY OSMER SCAPING SUPPORTS

On February 22, 2020 the museum held a scraping event in the yard. The purpose was to work on the restoration of the Mill Plain Station. Volunteers scraped supports for the roof that covers the overhang above the station platform. Al Gruber was there and along with helping, provided these pictures from the event. Work on the station will continue once the museum is reopened.



FRANZ GERENCIR WORKING ON ANOTHER SUPPORT.

Tonawanda Valley Restoration Receives Finishing Touches

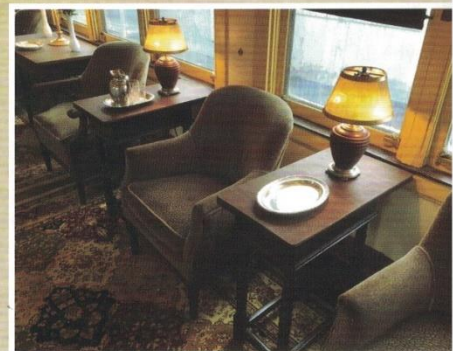
Progress on the restoration of the 1928 sleeper-lounge-observation car *Tonawanda Valley* was reported in the Third Quarter 2010 and the Fourth Quarter 2014 issues of this magazine. This car graced the tail end of the *20th Century Limited* before the train was streamlined in 1938. This update will most likely be the last, as the final touches of the restoration were completed in July 2018. Gold stenciled letters showing “PULLMAN” and “TONAWANDA VALLEY” have been added to both sides of the repainted car, and photos of the completed restoration appear on this special, two-page spread.

Before stenciling, there were several other things done to the car, as

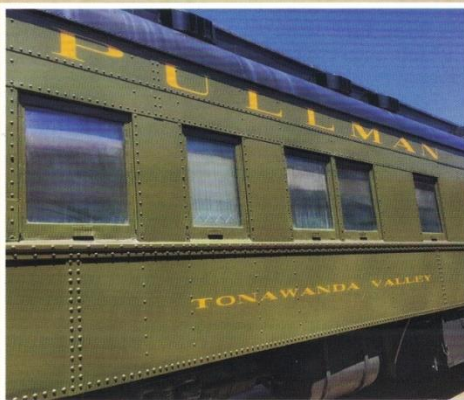
reported by Project Manager Art Slothower. The previous owner of the car told us that she had some pieces of furniture in her basement that were originally in the car, and that she wanted to donate them to the Museum. Arrangements were made to pick these pieces up and, after a thorough cleaning, they were placed in the lounge areas of the car.

Another addition to the car that is, however, relatively invisible, is a protective film

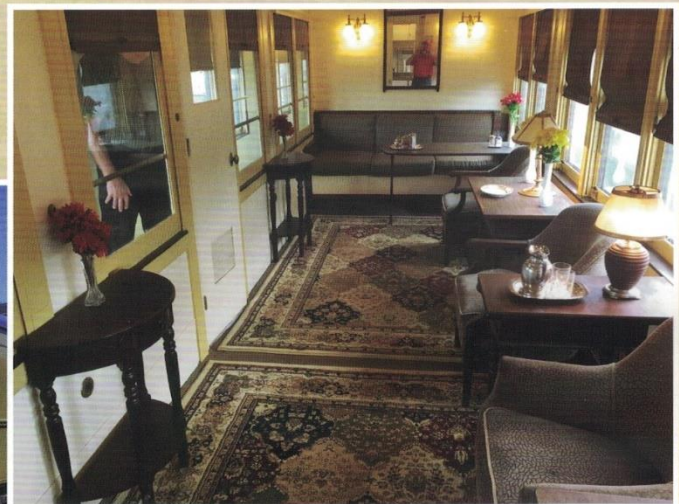
By
STEVE GOULD
Danbury Railway Museum



Two small tables were provided by the former owner.



Tonawanda Valley now carries authentic Pullman lettering.



This is the handsomely furnished forward lounge.

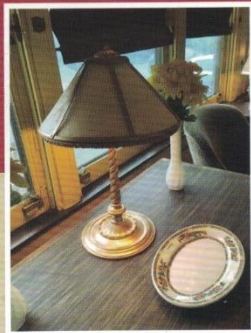


Table lamps such as this add to the décor.



This view looks forward in the rear observation lounge.



A three-legged table provided by the former owner graces the rear lounge.

installed on the windows to protect the furniture from the damaging rays of the sun.

As reported in the 2014 article, on May 11 and 12, 2013, the *Tonawanda Valley* “went home” to Grand Central Terminal as one of five pieces from the Museum’s collection to help in the Metro-North celebration of the 100th anniversary of the Terminal at the “Parade of Trains” two-day event. We had asked for the car to be placed at a bumper post near another *20th Century Limited* veteran, the *Hickory Creek* but, alas, it did not happen. Nevertheless, it still was a sight that many of us at the Museum never expected to see – the *Tonawanda Valley* at a Grand Central Terminal platform.



The car features a reproduction of the original iconic tail sign.



A plywood re-creation of the original red carpet beckons.

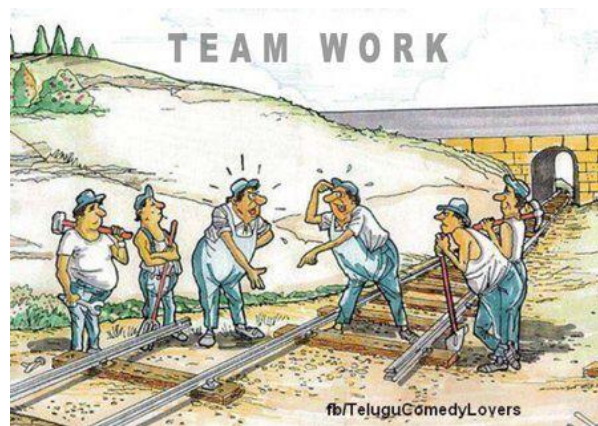
The *Tonawanda Valley* has been the featured car at all twelve Danbury Railway Days events held by the Museum to celebrate railroads, with the most recent one on August 4 and 5, 2018. A special “red carpet,” made from plywood sheets, leads visitors to the car for a tour. We welcome NYCSHS members to come to Danbury and see the car. While not open to the general public other than on special events as described above, if you let us know that you are a NYCSHS member, we will schedule a special tour for you. You will not be disappointed.

THE NEWSLETTER IS LOOKING FOR ARTICLES AND PICTURES ON RAILROADING. THE SUBMISSIONS WILL BE REVIEWED AND POSSIBLY INCLUDED IN OUR SUMMER OR FUTURE NEWSLETTERS. YOU CAN WRITE ABOUT HOW YOU GOT INTERESTED IN RAILROADING, SOME OF YOUR CHILDHOOD EXPERIENCES, ADVENTURES RIDING THE RAILS OR YOUR RAILROAD MODELING ACHIEVEMENTS. ARTICLES AND PICTURES CAN BE SENT TO THE DRM VIA E-MAIL (info@danburyrail.org). SUBMISSIONS FOR THE SUMMER NEWSLETTER SHOULD BY RECEIVED BY JULY 1, 2020. THANK YOU!



HERE ARE 5 TRAIN MOVIES YOU MIGHT LIKE TO WATCH WHILE YOU HAVE SOME EXTRA TIME.

- MONEY TRAIN (1995) AMAZON PRIME
- RUNAWAY TRAIN (1985) AMAZON PRIME
- SILVER STREAK (1976) AMAZON PRIME
- MURDER ON THE ORIENT EXPRESS (2017) YOU TUBE
- THE LADY VANISHES (1979) YOU TUBE/AMAZON PRIME



WE ALL LOOK FORWARD TO THE REOPENING OF THE MUSEUM AND HOPE IT WILL BE SOON!!

STAY HEALTHY AND STAY SAFE!!!